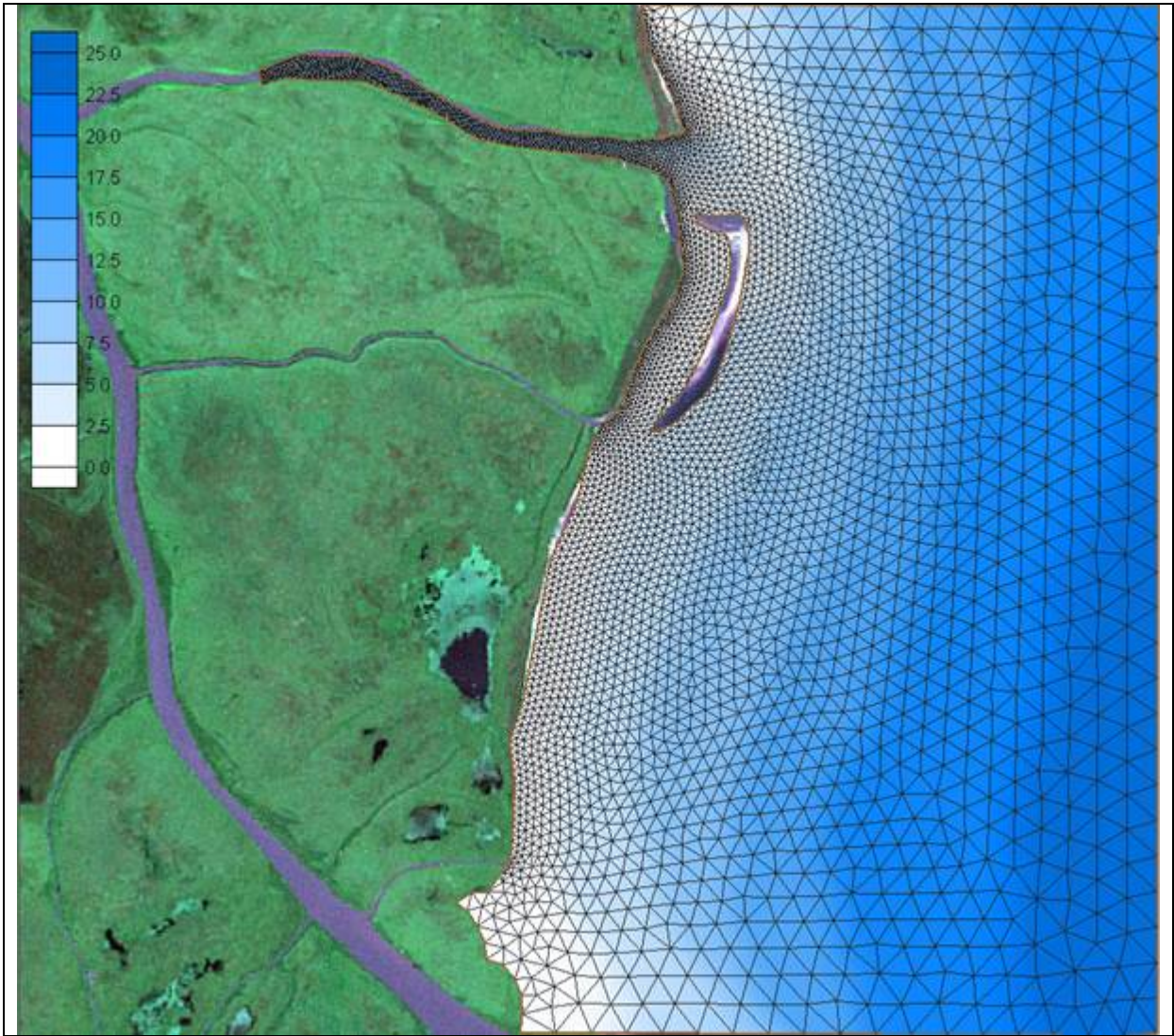


**Annex 12**

**The Modelling of Transport of Suspended Solids due to Dredging Activity in the Sandbar Section of the Bystre Branch**





**Computation net**





**Currents**



**Sand fraction**



### References

1. Luettich, R.A., Jr., J.J. Westerink, and N.W. Scheffner, (1992) ADCIRC: an advanced three-dimensional circulation model for shelves coasts and estuaries, report 1: theory and methodology of ADCIRC-2DDI and ADCIRC-3DL, Dredging Research Program Technical Report DRP-92-6, U.S. Army Engineers Waterways Experiment Station, Vicksburg, MS, 137p.
2. Maderich V. Brovchenko I., Fenical S., Shepsis V. (2004) Lagrangian Sediment Transport Model. Book of abstracts of Fall Meeting AGU 2004. San-Francisco.